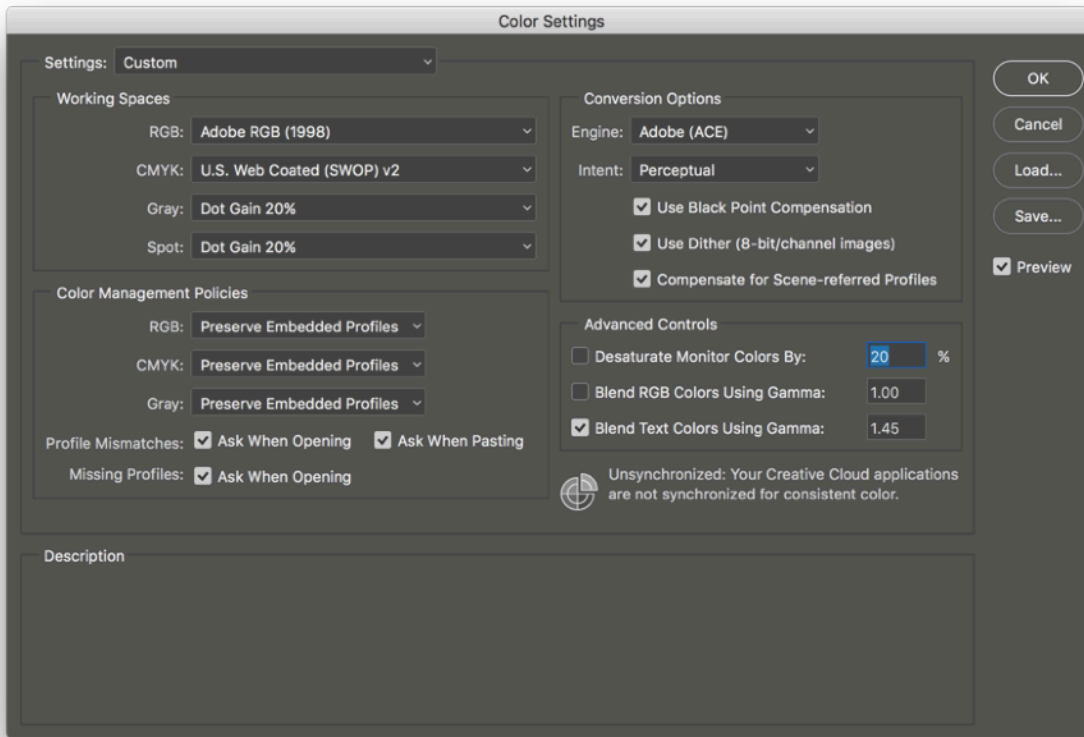


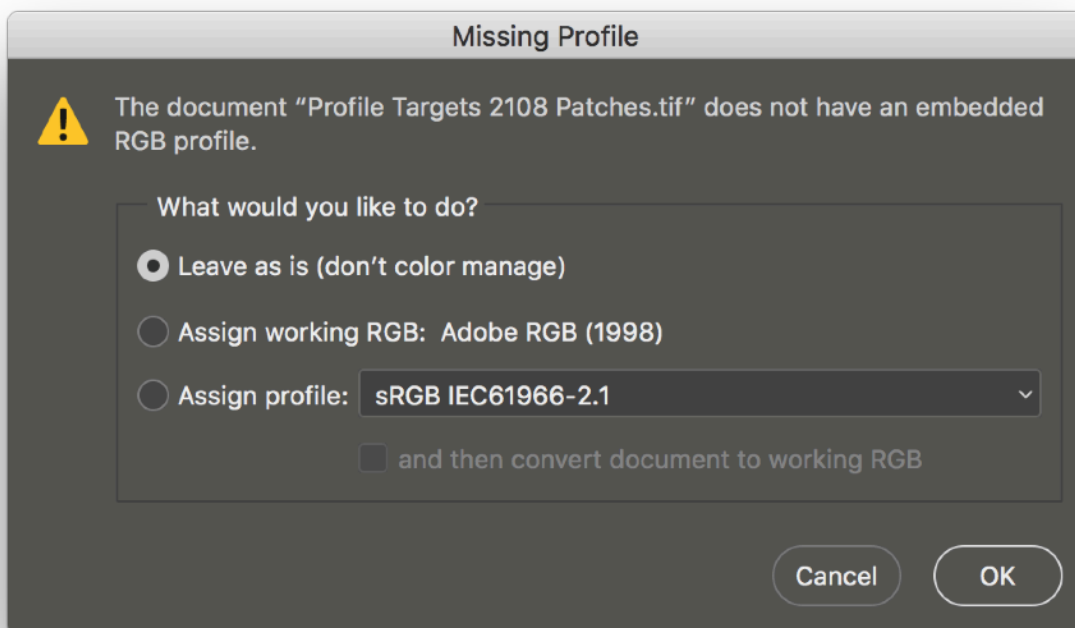
Directions for Printing Color Patches for Profiles Canon Pro-1000

Open Photoshop and make sure your Color Settings are set up properly for fine art inkjet printing.

Go to **Edit - Color Settings** Make sure everything is set up exactly like this screen shot.

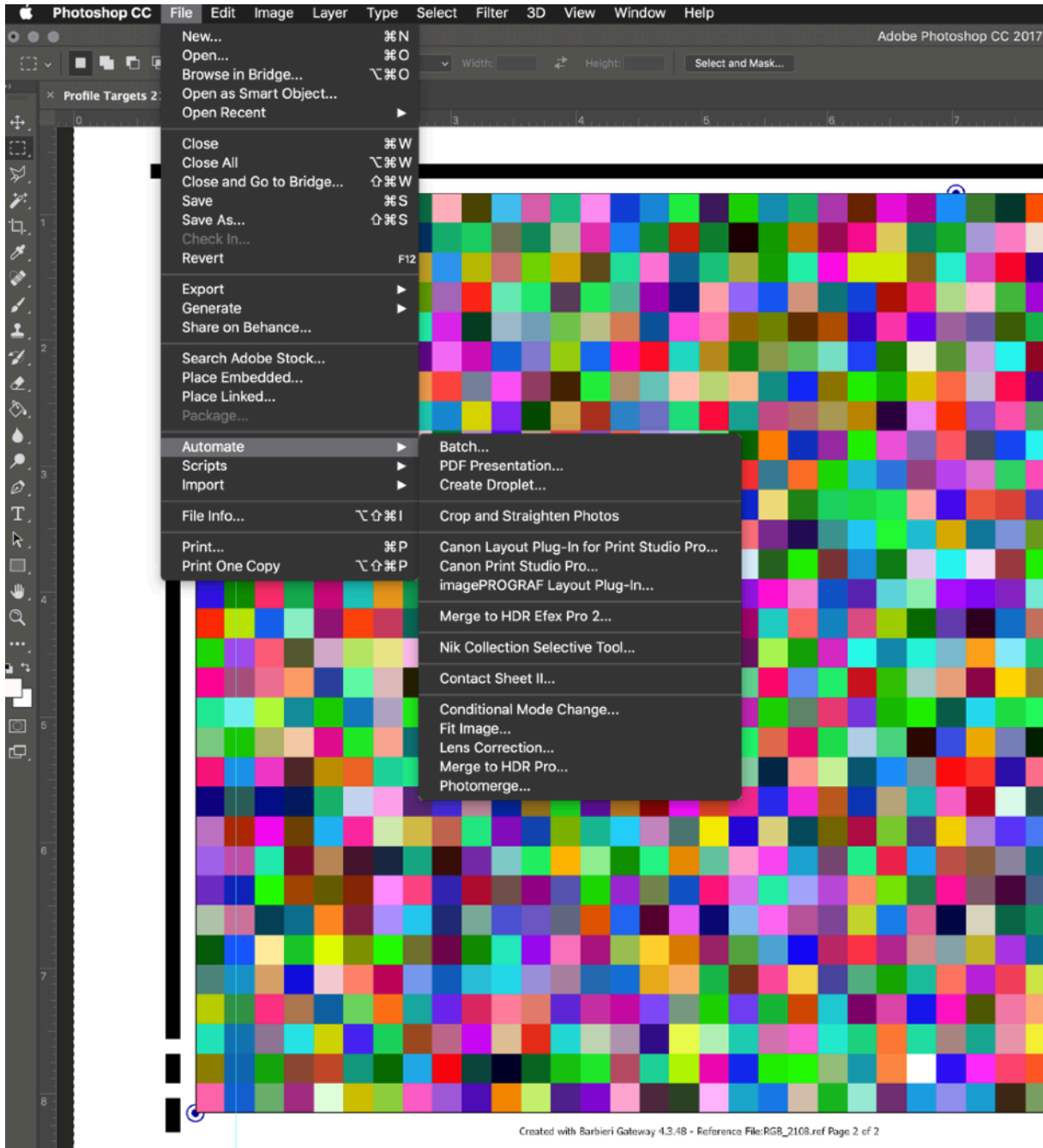


Now open the first file of color patches. You should now see this dialog box telling you that the file does not have an embedded RGB profile. This is good. Now Photoshop is set up for Adobe RGB (1998) Working Space and will let you know if a file you open is not Adobe RGB (1998) and give you an option of what to do. In this case **Leave as is (don't color manage)** and click **OK**



Directions for Printing Color Patches for Profiles Canon Pro-1000

After opening the first file go to **File - Automate**. Then choose **Canon Print Studio Pro**. This is the special printing software that comes with your Canon Pro-1000 printer. It is very easy to use and should be your preferred method of printing. Download and install the latest version if you haven't already.



Directions for Printing Color Patches for Profiles Canon Pro-1000

Your first window to work with on the right hand side is the tab named **Print Settings**.

First choose your printer that you want to print on. In this case it is the Canon Pro-1000

For Glossy and Luster Papers under Media Type choose **Photo Paper Pro Platinum**.

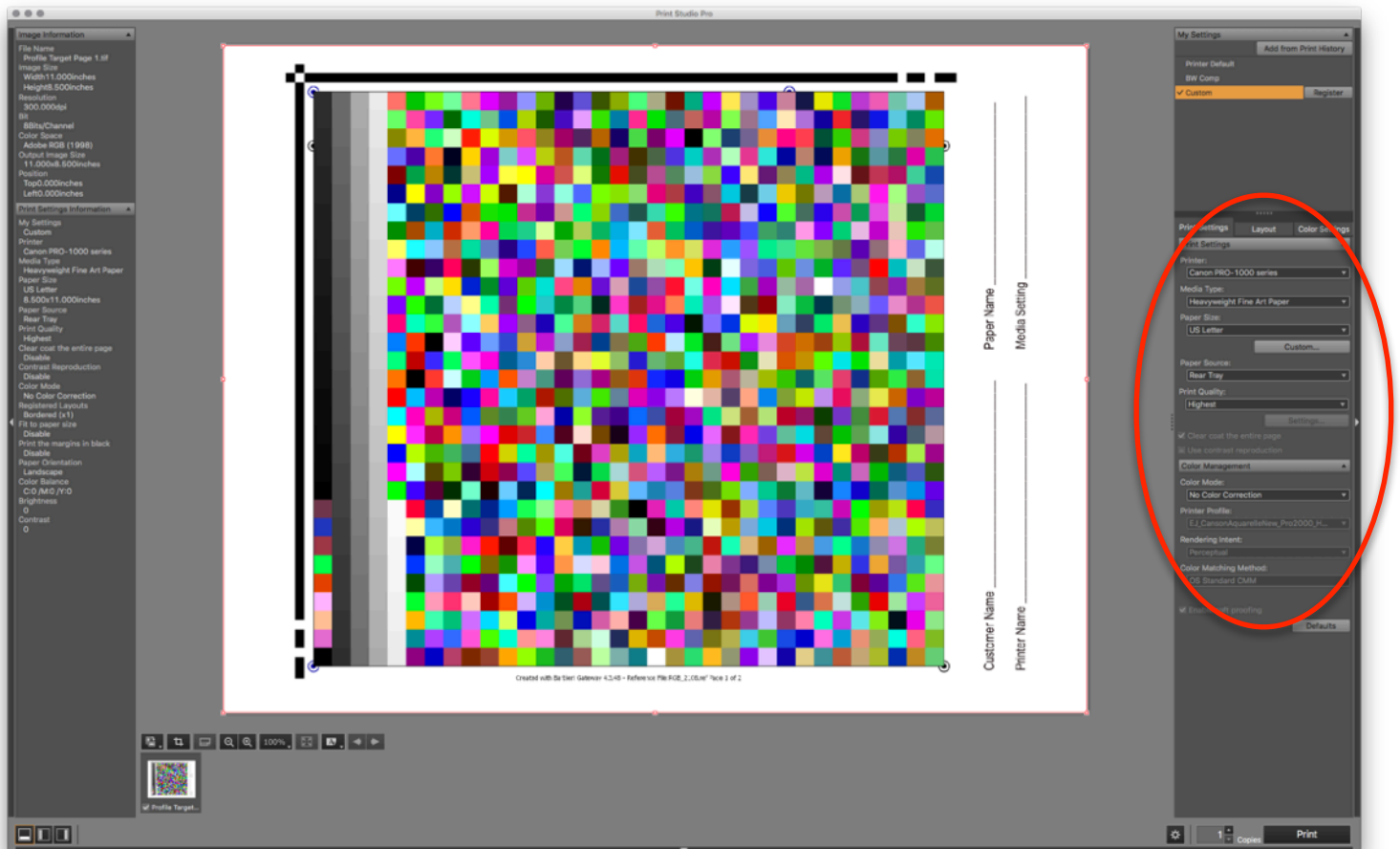
For Matte Papers under Media Type choose **Heavy Weight Fine Art Paper**.

Under Paper Size choose **US Letter**

Under Paper Source choose **Rear Tray** (this is really the top tray)

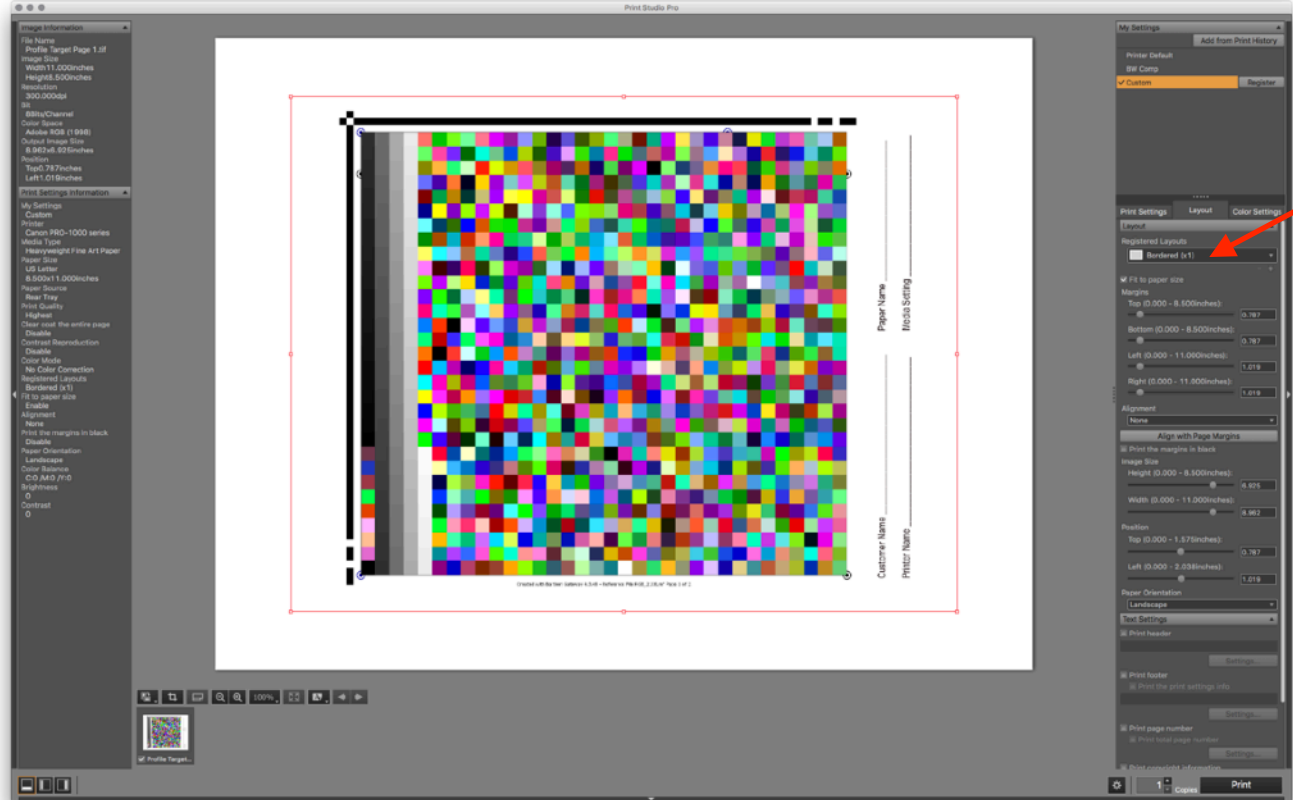
Under Print Quality choose Highest

Click on the little triangle to drop down the **Color Management** options and choose **No Color Correction**. This is critical for printing these patches. It is also the only time you will need to choose this option for color management.

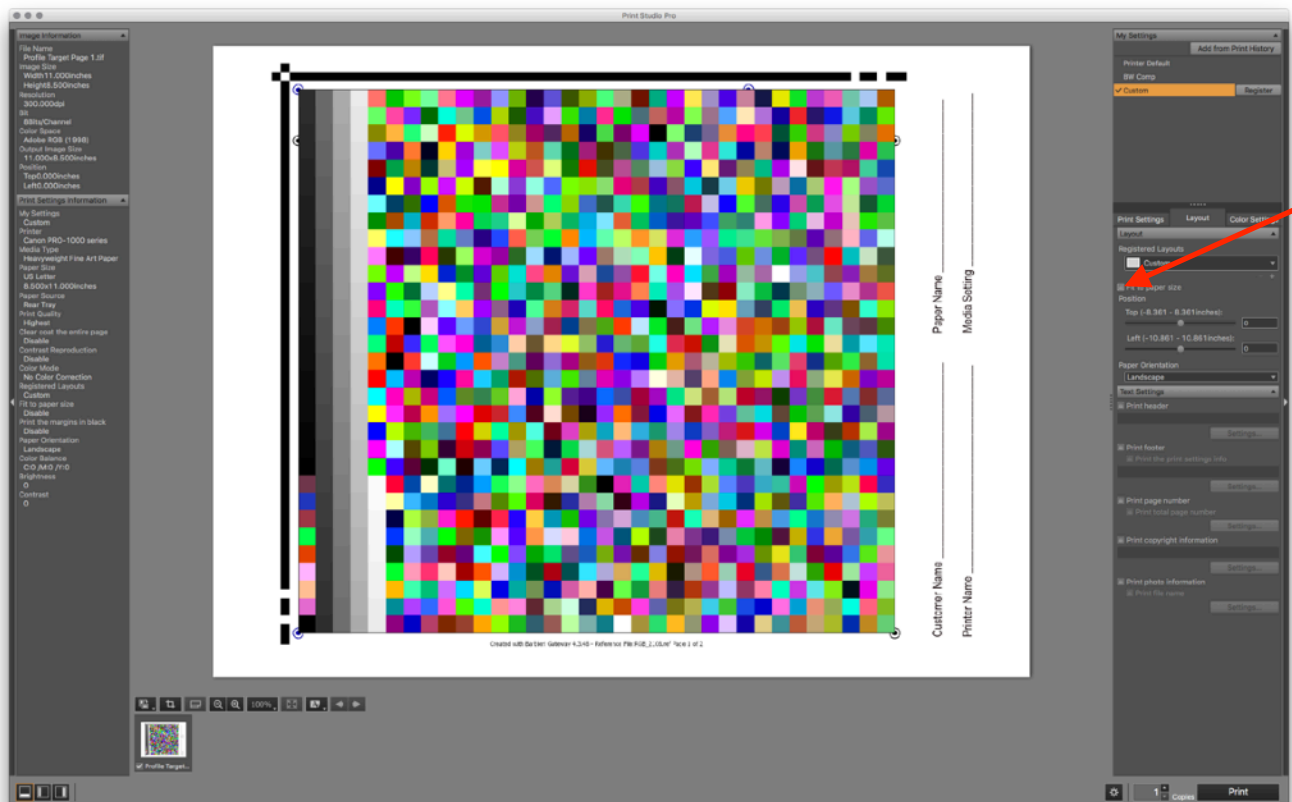


Directions for Printing Color Patches for Profiles Canon Pro-1000

Now go to the **Layout** tab. Choose Bordered (x1)

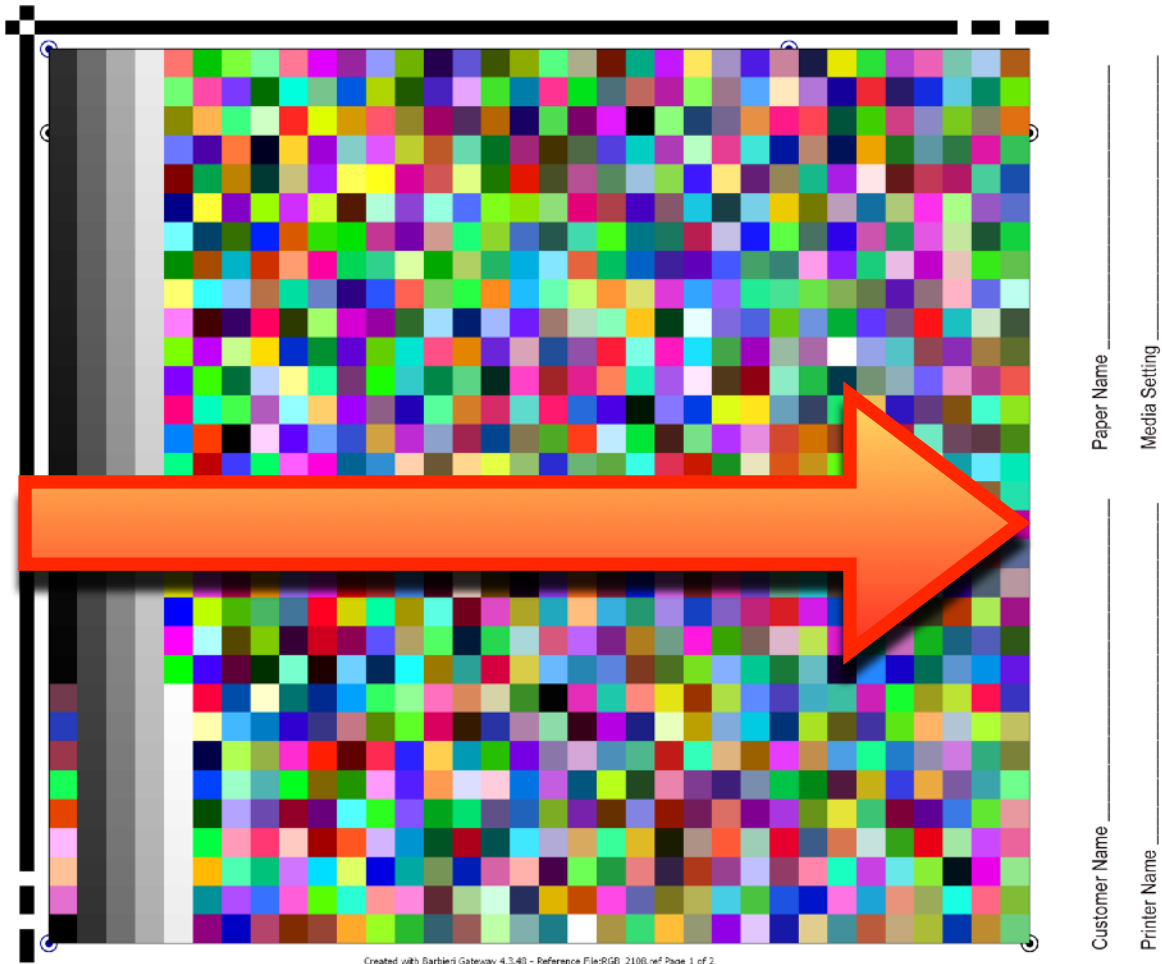


Now click off the Fit to paper size button so that the patches print 100% on the page.



Directions for Printing Color Patches for Profiles Canon Pro-1000

Now push print. Open up the next page of patches and do the same thing. Actually all of your settings should not have changed so you should be able to just push print. To make sure the patches are the right size measure from the outside of the thick black line on the left to the edge of the color patches and it should be exactly 8 5/16.



Please write in your customer information in the indicated spaces along with your printer make and model, paper type and media settings so we have a reference. Be sure not to write over any of the squares.

Once printed, the paper can be cut to separate the two sets of patches.

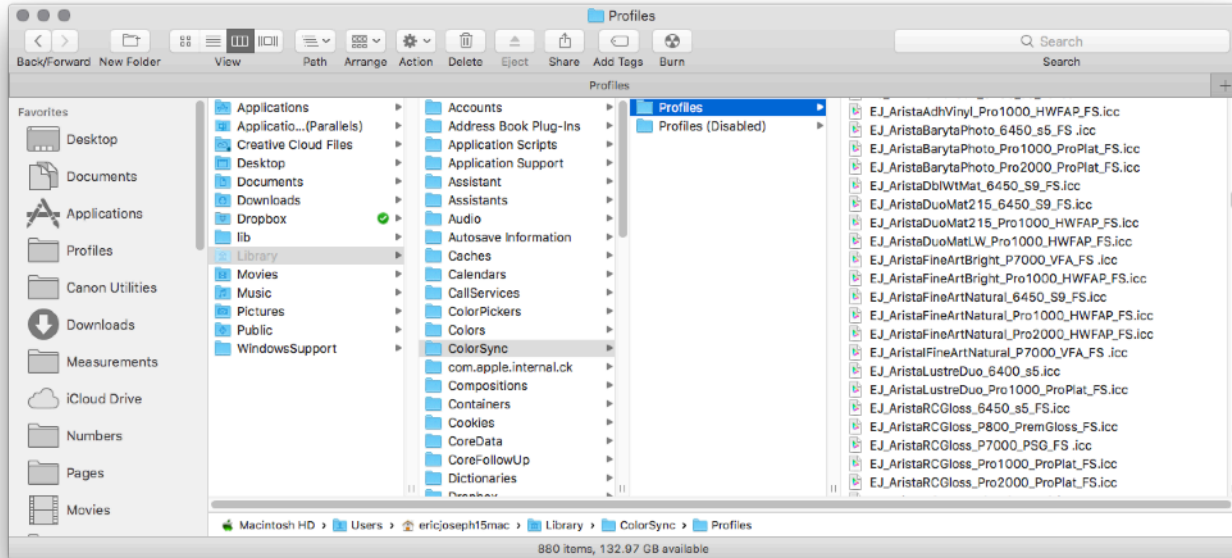
Mail them in a flat mailer to:
Freestyle Photo & Imaging Supplies
Profile Service Department
5401 West Sunset Blvd.
Hollywood, CA 90027

Directions for Printing Color Patches for Profiles Canon Pro-1000

Once received, we will scan the patches and create a custom profile.
When complete we will email your new custom profile directly to you.

To load your profile: On Mac OS, copy the file in to your Library – Colorsync – Profiles folder.

To get there, click on the Go menu on your menu bar. Click and hold the Option Key and you will see the Library folder appear. Choose the Library Folder with your Mouse. Double click on the ColorSync Folder and then within that folder click on the Profiles Folder. Copy the profile we emailed to you in to this folder.



On Windows, simply right click on the file and choose Install Profile. When you start programs like Adobe Photoshop or Lightroom, your custom profile will appear in the profiles list.

If this doesn't work go to your C drive - System - Window32 - spool - drivers - color folder and copy the files in to that folder.

Please contact us if you have any questions at:

Eric Joseph - 323-660-3460 ext. 109 • etjoseph@freestylephoto.biz